

Ray-On

R200

DGRC Mono channel Column Loudspeaker

The Ray-On range includes four passive column loudspeakers of 0,2 to 2 meters in height, based on the patented DGRC principle. This innovation provides a homogeneous sound coverage and perfect speech intelligibility over the entire audience area.

The elegant design of the columns, with their finely perforated grid, yields optimum results in terms of integration and aesthetics. Being vertically mounted, and no tilted off the walls, the Ray-On columns remains extremely discrete.

Ray-On 200 is a 2m high single channel column loudspeaker that should be mounted vertically. Its acoustical performances are very close to DSP loudspeakers ones thanks to the DGRC principle. With a nominal range of 42m, it offers a high-quality sound for very large spaces in airports, train stations, churches, shopping malls, amusement park...

Like every column of the Ray-On range, Ray-On 200 can be switched between a low impedance mode and a 70V/100V mode and can be used indoor and outdoor.

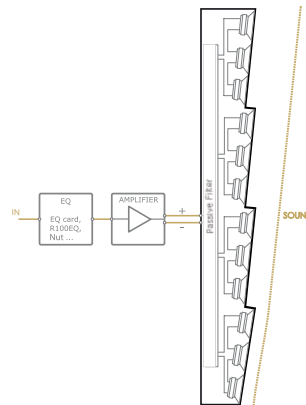
Ray-On 200 is available in EN 54-24 certified version.



- Max SPL: 94,5dB at 16m
- Impedance: Low Z & 100V modes
- Bandwidth: 120Hz-19kHz
- Continuous Power: 300W
- IP54
- Paintable
- EN54-24 TYPE B
- 5 years warranty

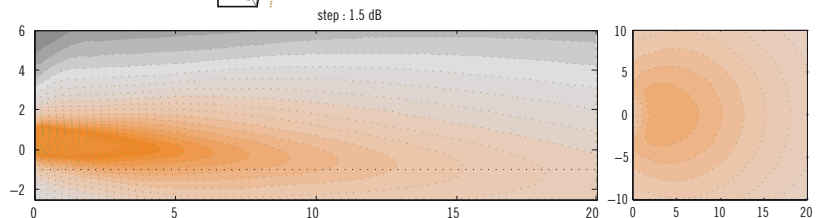


DGRC principle (Example for a 1m column)

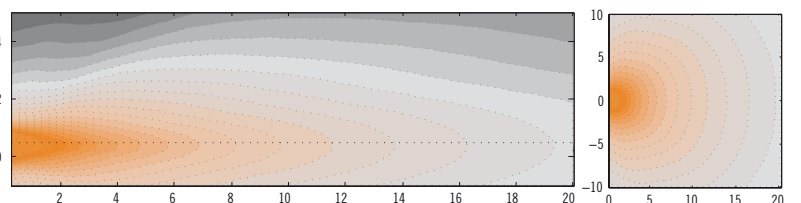


Ray-On is based on the DGRC principle: the internal loudspeaker inclination associated with the calculated height of installation allows to cover the audience area.

Hence Ray-On has to be mounted vertically. The range of Ray-On depends both of the Ray-On model and the height of installation.



Ray-On R100 vertical and horizontal directivity: sound level for the speech octaves (500Hz-1kHz-2kHz) in the vertical median plane and 80cm below the column.



Standard 1m column vertical and horizontal directivity: sound level for the speech octaves (500Hz-1kHz-2kHz) in the vertical median plane and 80cm below the column.

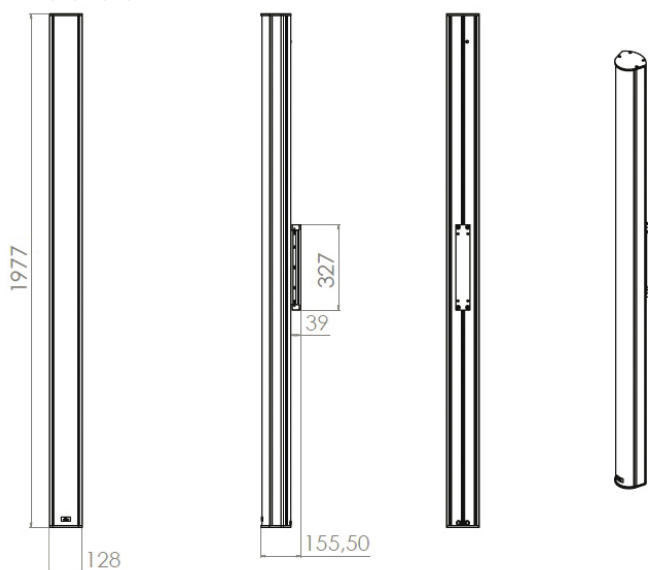


R200

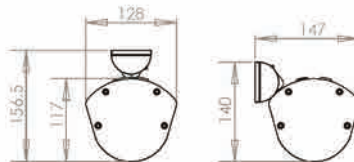
Technical Specifications

Mechanical drawing

Front views



Top views



Rigging



Technical Specifications

Acoustical data

| | |
|----------------------------------|---------------|
| Range +/- 3dB (nominal height) | 31 m |
| Range +/- 5dB (nominal height) | 42 m |
| Max SPL (pink noise) | 94,5dB at 16m |
| Continuous power | 300W |
| Frequency bandwidth (-10 dB) | 120Hz- 18kHz |
| Horizontal opening angle (1 kHz) | 180° |
| Loudspeaker | 24x 2,5" |

Mechanical data

| | |
|-----------------|---|
| Net weight | 16,2 kg |
| Shipping weight | 17,8 kg |
| Height | 1977 mm |
| Width | 128 mm |
| Depth | 117 mm |
| Standard colors | White RAL 9016 Black RAL 9005 |
| Material | Aluminium body, treated steel Rustproof and UV proof |

Electrical data

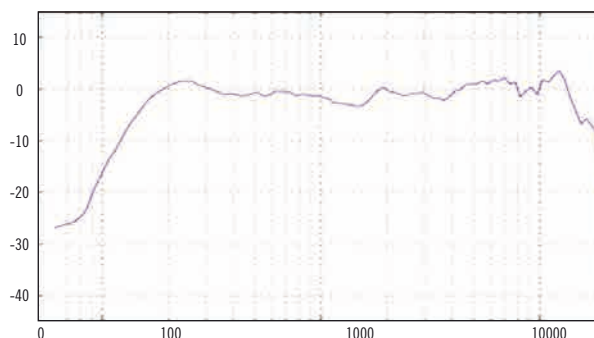
| | |
|----------------------|---|
| Impedance | 8Ω, 400/200/100/50Ω |
| Max continuous power | 300W, 25W/50W/100W/200W |
| Connector | Ceramic terminal block, screw Loop-through |
| Wire section | from 0,5 to 2,5mm ² |

Tuning and exploitation

| | |
|--------------------------|---|
| Recommended equalisation | Speech: 5 param Cells Music: 6 param Cells |
| Modeling | EASE/ CATT |
| Environnement | IP54 from -25°C to 55°C indoor & outdoor |
| Mounting | Vertical |
| Nominal mounting height | 2,5m |

Frequency response

Ray-On 200 frequency response, with recommended equalisation. Average from 2 to 30m axis.



The following graph shows the range of the column versus height of installation.

