

The Ray-On range includes four passive column loudspeakers of 0,2 to 2 meters in height, based on the patented DGRC principle. This innovation provides a homogeneous sound coverage and perfect speech intelligibility over the entire audience area.

The elegant design of the columns, with their finely perforated grid, yields optimum results in terms of integration and aesthetics. Being vertically mounted, and no tilted off the walls, the Ray-On columns remains extremely discrete.

With only 192mm in height, Ray-On Mini is the perfect companion for the other columns in the Ray-On range and designed to complement the R200, R100 and R60 in smaller spaces.

As with all Active Audio public address speakers, we focused on intelligibility, elegance and ease of installation. Ray-On Rmini is available in Black or White and can be painted any colour.

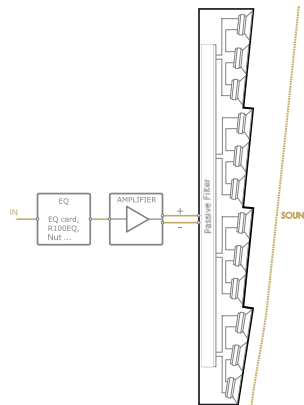
Like every column of the Ray-On range, Ray-On Mini can be switched between a low impedance mode and a 70V/100V mode and can be used indoor and outdoor.

Ray-On Mini is available in EN 54-24 certified version.



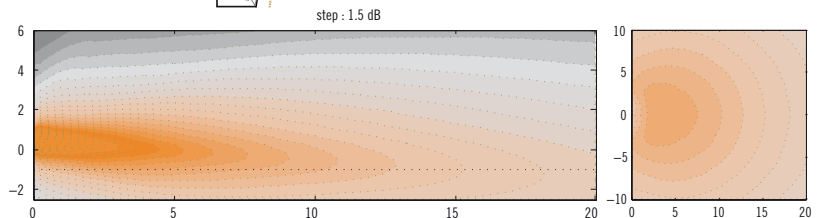
- Max SPL: 97dB at 1m**
- Impedance : Low Z & 100V modes**
- Bandwidth: 120Hz-18kHz**
- Continuous Power: 30W**
- IP54**
- Paintable**
- EN54-24**
TYPE B
- 5 years warranty**

DGRC principle (Example for a 1m column)

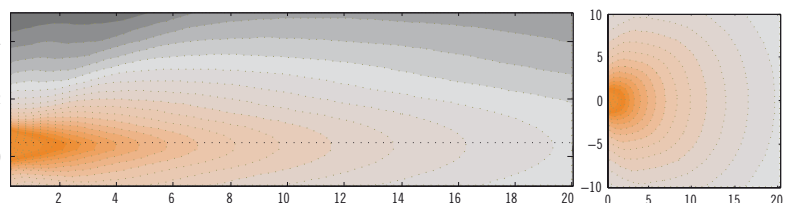


Ray-On is based on the DGRC principle: the internal loudspeaker inclination associated with the calculated height of installation allows to cover the audience area.

Hence Ray-On has to be mounted vertically. The range of Ray-On depends both of the Ray-On model and the height of installation.



Ray-On R100 vertical and horizontal directivity: sound level for the speech octaves (500Hz-1kHz-2kHz) in the vertical median plane and 80cm below the column.



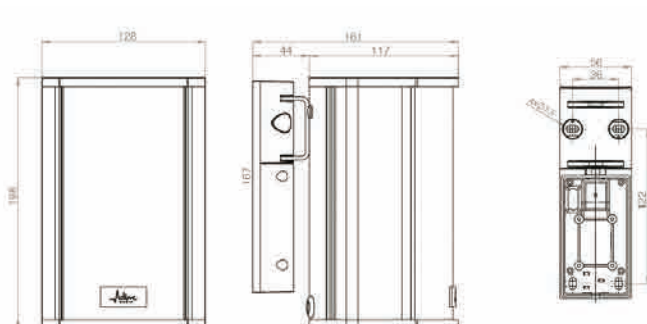
Standard 1m column vertical and horizontal directivity: sound level for the speech octaves (500Hz-1kHz-2kHz) in the vertical median plane and 80cm below the column.

RMini

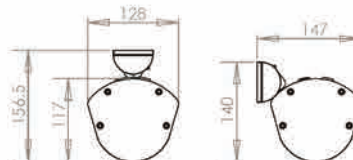
Technical Specifications

Mechanical drawing

Front views



Top views



Technical Specifications

Acoustical data

Range +/- 3dB (nominal height)	3,2m
Range +/- 5dB (nominal height)	5m
Max SPL (pink noise)	97dB at 1m
Continuous power	30W
Frequency bandwidth (-10 dB)	120Hz- 18kHz
Horizontal opening angle (1 kHz)	180°
Loudspeaker	2x 2,5"

Mechanical data

Net weight	2 kg
Shipping weight	2.7 kg
Height	192 mm
Width	128 mm
Depth	117 mm
Standard colors	White RAL 9016 Black RAL 9005
Material	Aluminum body, treated steel Rustproof and UV proof

Electrical data

Impedance	6Ω, 1333/667/333Ω
Max continuous power	30W, 7,5W/15W/30W
Connector	Ceramic terminal block, screw Loop-through
Wire section	from 0,5 to 2,5mm ²

Tuning and exploitation

Recommended equalisation	Speech : 5 param Cells Music : 6 param Cells
Modeling	EASE and CATT
Environnement	IP 54 from -25°C to 55°C indoor & outdoor
Mounting	Vertical
Nominal mounting height	1,9m

Frequency response

Ray-On Mini frequency response, with recommended equalisation.
Average from 2 to 5m axis.

