

# Ray-On

# R100

DGRC Mono channel Column Loudspeaker

The Ray-On range includes four passive column loudspeakers of 0,2 to 2 meters in height, based on the patented DGRC principle. This innovation provides a homogeneous sound coverage and perfect speech intelligibility over the entire audience area.

The elegant design of the columns, with their finely perforated grid, yields optimum results in terms of integration and aesthetics. Being vertically mounted, and no tilted off the walls, the Ray-On columns remains extremely discrete.

Ray-On 100 is a 1m high single channel column loudspeaker that should be mounted vertically. Its acoustical performances are very close to DSP loudspeakers ones thanks to the DGRC principle. With a nominal range of 20m, it offers a high-quality sound for medium spaces such as conference rooms, airports, train stations, churches, shopping malls, amusement parks, etc...

Like every column of the Ray-On range, Ray-On100 can be switched between a low impedance mode and a 70V/100V mode and can be used indoor and outdoor.

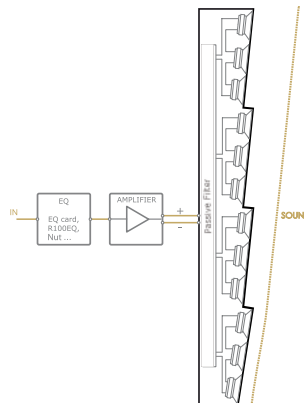
Ray-On 100 is available in EN 54-24 certified version.



- Max SPL: 92dB at 8m
- Impedance: Low Z & 100V modes
- Bandwidth: 120Hz-18kHz
- Continuous Power: 150W
- IP54
- Paintable
- EN54-24 TYPE B
- 5 years warranty

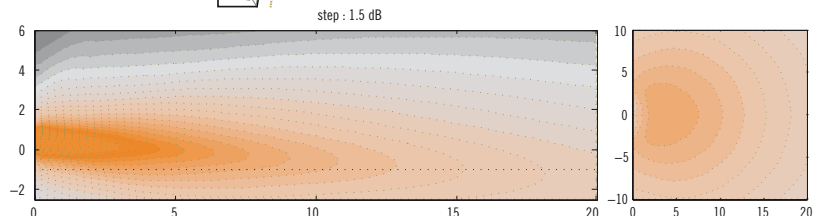


### DGRC principle (Example for a 1m column)

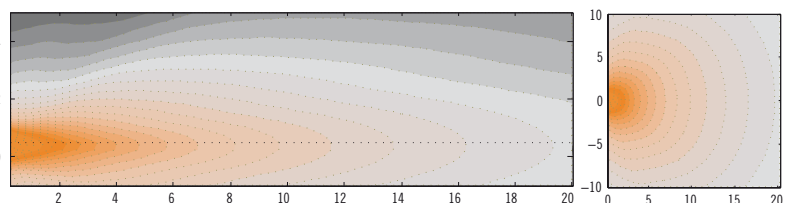


Ray-On is based on the DGRC principle: the internal loudspeaker inclination associated with the calculated height of installation allows to cover the audience area.

Hence Ray-On has to be mounted vertically. The range of Ray-On depends both of the Ray-On model and the height of installation.



**Ray-On R100 vertical and horizontal directivity:** sound level for the speech octaves (500Hz-1kHz-2kHz) in the vertical median plane and 80cm below the column.



**Standard 1m column vertical and horizontal directivity:** sound level for the speech octaves (500Hz-1kHz-2kHz) in the vertical median plane and 80cm below the column.

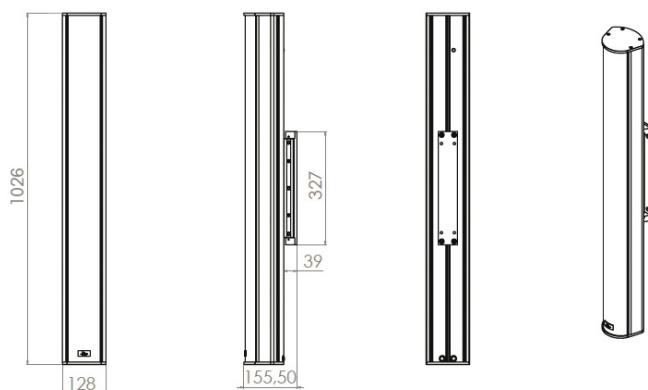


# R100

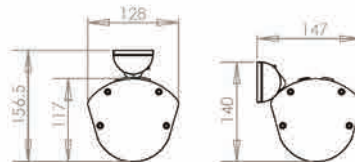
## Technical Specifications

### Mechanical drawing

Front views



Top views



Rigging



### Technical Specifications

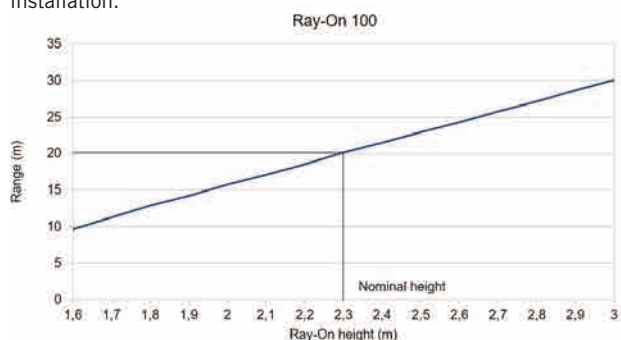
#### Acoustical data

Range +/- 3dB (nominal height)	15 m
Range +/- 5dB (nominal height)	20 m
Max SPL (pink noise)	92dB at 8m
Continuous power	150W
Frequency bandwidth (-10 dB)	120Hz- 18kHz
Horizontal opening angle (1 kHz)	180°
Loudspeaker	12x 2,5"

#### Mechanical data

Net weight	8,3 kg
Shipping weight	9,1 kg
Height	1026 mm
Width	128 mm
Depth	117 mm
Standard colors	White RAL 9016 Black RAL 9005
Material	Aluminium body, treated steel Rustproof and UV proof

The following graph shows the range of the column versus height of installation.



#### Electrical data

Impedance	8Ω, 400/200/100Ω
Max continuous power	150W, 25W/50W/100W
Connector	Ceramic terminal block, screw Loop-through
Wire section	from 0,5 to 2,5mm <sup>2</sup>

#### Tuning and exploitation

Recommended equalisation	Speech: 5 param Cells Music: 6 param Cells
Modeling	EASE/ CATT
Environnement	IP54 from -25°C to 55°C indoor & outdoor
Mounting	Vertical
Nominal mounting height	2,3m

#### Frequency response

Ray-On 100 frequency response, with recommended equalisation. Average from 2 to 15m axis.

