

Dispersion Series

DX5

Multipurpose ultra-compact loudspeaker

Two-way coaxial bass reflex
1 x 5" ventilated driver (1.5" coil)
1 x dome tweeter

Features

Versatile F.O.H./ stage monitor speaker
"Studio Monitor" type performance
Compact and discreet

Applications

Nearfield listening
Distributed audio
Stage monitoring
In-fill/near-fill/delay etc.

Specifications

100 W AES
97 dB SPL @ 1W at 1m
16 Ohm
100° conical opening
10.2" x 7.1" x 7.1" (260 x 180 x 180 mm)

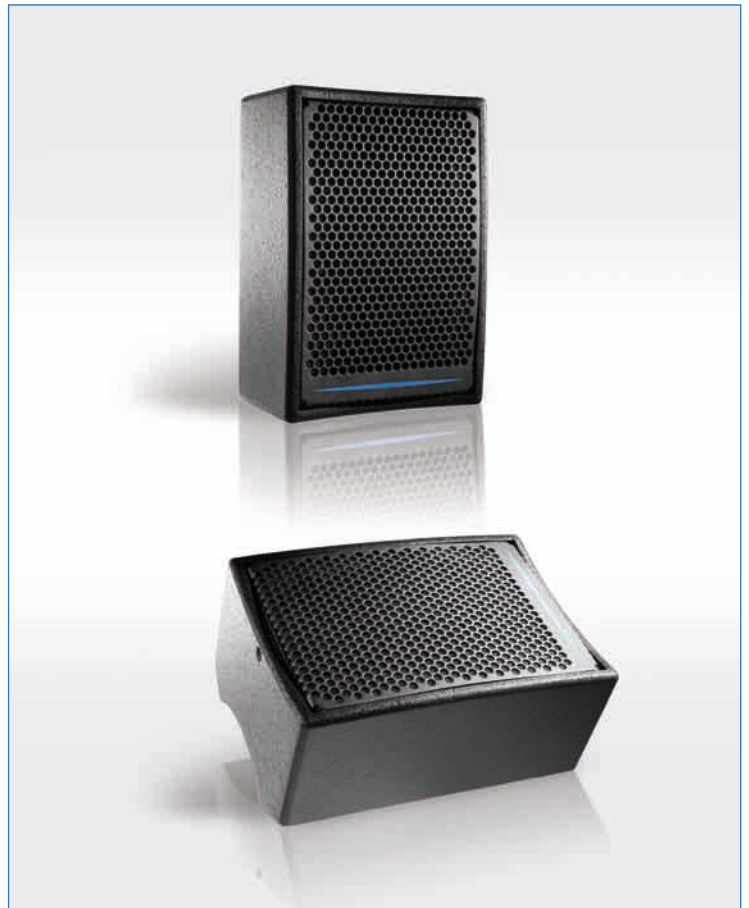
2 thermal protections
Mono-amplification mode
Optional subwoofer

The APG DX5 speaker is an ultra-compact two-way wideband speaker. The LF/MF section comprises a 5" long-throw speaker loaded in a bass-reflex enclosure, with a coaxial dome tweeter handling the HF section.

Like the other APG Dispersion series, the DX5 uses a coaxial loudspeaker set that provides extremely coherent coverage through 100° conical field.

The DX5 is characterized by an exceptional power/size ratio, great clarity in sound reproduction and highly sophisticated ergonomics: due to its cabinet geometry, with a 30° on one side, the DX5 is at home either on the stage as a monitor, or as a main front of house speaker. The wooden enclosure features a pole mount socket, recessed connectors and threaded inserts, allowing the use of a 4mm steel bracket for flying or wall-/ceiling-mount purposes (option ETDX5).

Dedicated SPX5 and LPDX5 processors are available to operate the DX5 in wideband mode or combined with APG SB115 subwoofers.



Multi purpose DX5 speaker in FOH and floor monitor

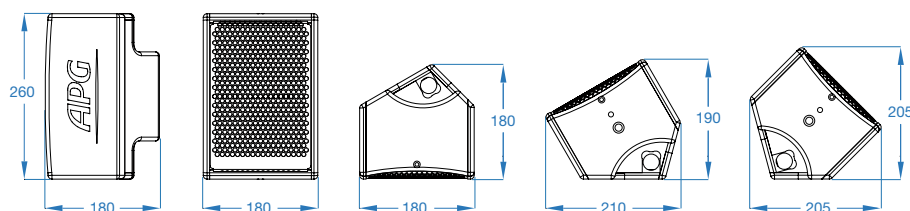
The ultra-compact DX5 offers total versatility between all types of nearfield listening applications: stage monitoring; distributed systems; in-fill/near-fill/delay etc; PA with or without subwoofers. DX5 is designed for small to medium size venues or as a distributed system for coverage of large spaces. Its compactness and sonic performance make DX5 the perfect loudspeaker for applications where unobtrusiveness and high quality sound reproduction are at a premium.

The DX5 is suitable for all modes of use: as a stage monitor; pole-mounted, or wall- or ceiling-mounted using the ETDX5 lyre bracket. Although it has an impedance of 16 Ohm, the DX5 can be fitted with an optional transformer for 70V-100V line applications. In wideband mode with no processor the DX5 is perfect for speech and vocal applications such as conferencing. With a processor, it offers highly accurate music reproduction. It is also a very discreet and efficient stage monitor for theatre or TV studios. Combined with APG subwoofers, DX5 is capable of high level performance in mid-sized venues. The LPDX5 and SPX5 processors allow the management of a stereo system and subwoofer respectively, with or without active transducer protection. APG's digital processor offers complete digital signal processing for individual speaker processing as well as full system management.

APG

DX5

Technical Specifications



Features

	Low section	High section
Frequency range with processor (± 3 dB)	65 Hz à 2500 Hz	2500 Hz à 19 kHz
Frequency range without processor (± 3 dB)	80 Hz à 2500 Hz	2500 Hz à 19 kHz
Sensitivity @ 1W 1m, f > 100 Hz	92 dB SPL (1)	
Maximum continuous level at 1m, f > 100 Hz	115 dB SPL	
Peak level at 1m, f > 100 Hz	121 dB SPL	
Dispersion angle	110° conical (2)	
Nominal impedance	16 Ohm	

Components

	Low section	High section
Transducers	1 x 5" coaxial ventilated driver	1" dome tweeter
Coil diameter	37 mm	14 mm
Type of load	Bass reflex	Coaxial horn

Power

Recommended amplification	100 to 200 W
Peak	300 W
AES (3)	100 W

Construction and characteristics

Cabinet	15 mm Finnish birch plywood
Crossovers	Air core inductors, plastic film capacitors, wirewound resistors
Circuit protection	Thermal circuit breaker with automatic reload
Coating	Black, impact resistant aquarethane
Front panel	Acoustically transparent perforated steel, 1.5 mm thick (5 mm acoustic foam)
Connectors	2 x SPEAKON NLM4P (4)
Fittings	3/8" microphone stand socket
Dimensions (H,W,D)	10.2" x 7.1" x 7.1" (260 x 180 x 180 mm)
Unit weight	8.8 lb (4 kg)
Gross weight, packed x 2	26.4 lb (12 kg)

Options and Accessories

ETDX5	Fixed installation lyre bracket for DX5
INOX01	Stainless steel screws and waterproof treatment cone driver
T50	Line transformer 70/100 V, 50 W

Contact us for all painting or weatherproof adaptation

Signal Processing

The SPX5 processor provides active crossover, system alignment, infrasonic and ultrasonic protection, standard filtering and distribution functions for a stereo system including use of APG subwoofers.

The LPDX5 processor includes a simulation of operating parameters that allows control of diaphragm displacement, voice coil temperature and amplifier clip. This processor also features a keyboard to select the type of APG subwoofer used with the DX5.

Digital APG processors provide complete digital signal processing for all kinds of system configuration. APG France provides presets according to applications.

We have included separate data for the High and Low Section in the Features table; although it is unusual to provide these in the specifications of a passive system such as DS8, it allows calculation of the precise amount of energy delivered by each transducer, and also the frequency range within which they operate.

(1) Sensitivity measures 92 dB before power shaping and 100dB afterwards. Power shaping optimizes system linearity and increases power handling in the given frequency range.

(2) Dispersion is controlled from 800 Hz. The angles given here are irrelevant below this frequency.

(3) In order to take full benefit of the dynamic performance, sonic quality and reliability of the speakers, the recommended amplification must at least correspond to the AES rating. Lesser amplification is acceptable for applications requiring less power (near-field, distributed systems,...), whilst not being less than half the AES rating. The AES power handling corresponds to a 2 hour test using weighted pink noise (peak factor of 6dB) through a frequency range of one decade.

(4) The SPEAKON connectors are wired pin 1+, cold pin 1-.

(5) The ETDX5 is a simple and costeffective lyre bracket dedicated to fixed installation.

(6) The DX5 can be provided with custom color (PENTONE or RAL ref). Two levels of waterproof protection can be applied depending on the environment.

5 YEARS WARRANTY "A five years warranty covers passive filters, transducers and compression drivers. The warranty does not cover cosmetic damages and damages due to misuse, improper installation, or damages caused by alterations.

Printing : November 2013

APG has a comprehensive research and development policy for the continual improvement of its products and service. Due to this, new materials, manufacturing methods and technological changes may be introduced without prior notice. As a result, an APG product can differ from its published description in certain areas. However, unless otherwise indicated, its characteristics will always equal or better the published specifications.