

5XT ULTRA COMPACT ENCLOSURE



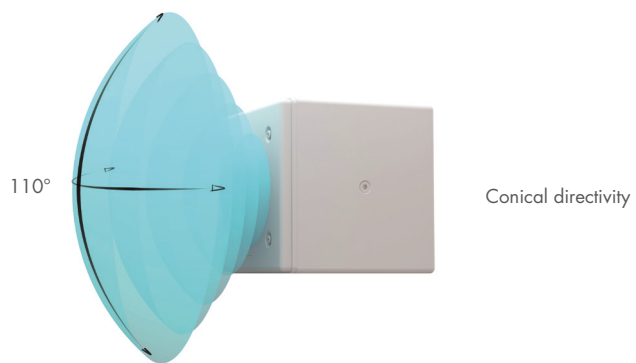
ELECTRO-ACOUSTICS



The 5XT is an ultra-compact coaxial system designed for short throw sound reinforcement applications requiring minimum visual impact. The 5XT features a 1" diaphragm compression driver coaxially loaded by a 5" low-mid frequency transducer mounted in a bass-reflex cabinet.

The 5XT operates from 95 Hz to 20 kHz. The coaxial transducer arrangement produces a 110° axisymmetric directivity output with a smooth tonal response free of secondary lobes over the entire frequency range.

The internal passive crossover network uses custom filters. The L-Acoustics amplified controllers L-Drive parameters ensure the linearization and protection of the transducers.



PHYSICAL

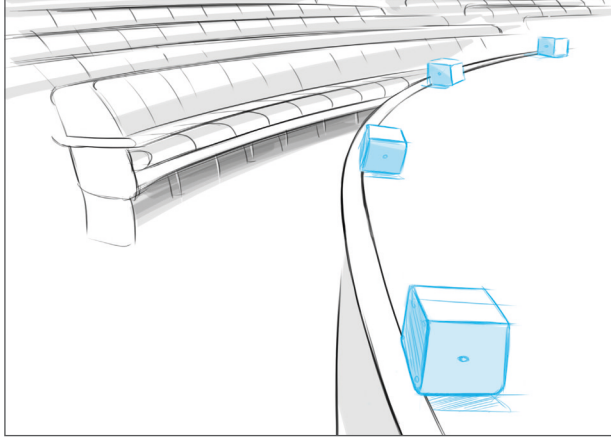
The 5XT cabinet is made of first grade Baltic birch plywood to ensure maximum acoustical and mechanical integrity. It weighs 3.5 kg and its ultra-compact size makes for an easy integration in any situation.



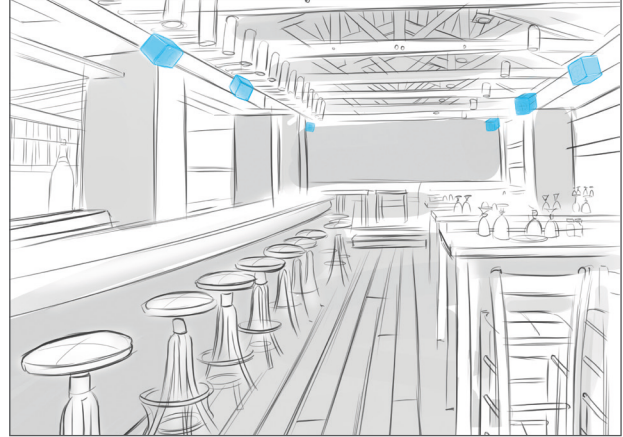
White and RAL architectural program

APPLICATIONS AND BENEFITS

The 5XT is an ideal fill enclosure due to its capability to deliver a high SPL in the MF/HF region and complement larger systems. In distributed applications, sound designers can take advantage of its wide conical directivity pattern offering a smooth off-axis response, where most of the audience is located. Its ultra-compact format and optional white or RAL color program means that it can satisfy any architectural requirement.



Front-fills



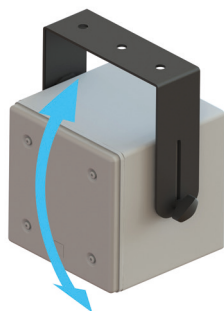
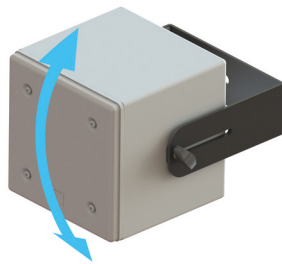
Distributed

RIGGING

The 5XT can be pole-mounted using the 3/8" microphone-stand insert. Other deployments such as wall-mounted, ceiling-mounted or flown are quick and easy, with the ETR5 bracket that offers multiple set-up options and various orientations.



ETR5
U-bracket for 5XT



Wall or ceiling mounts

3/8" insert



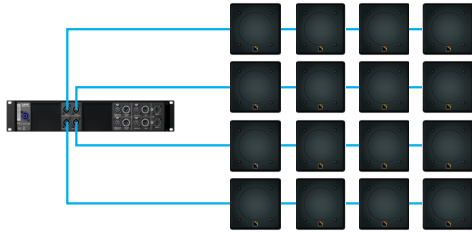
Pole mount

AMPLIFIED CONTROLLERS

LA4X: amplified controller with DSP



4 x 1000 W/8 ohms or 4 ohms
4 inputs x 4 outputs architecture

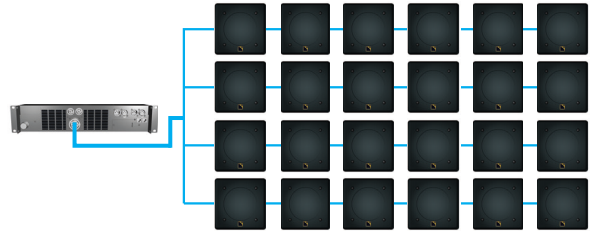


Max 16 enclosures per amplified controller

LA8: amplified controller with DSP



4 x 1800 W/4 ohms or 2.7 ohms
2 inputs x 4 outputs architecture



Max 24 enclosures per amplified controller

L-CASE: transport and operation case for electronics



Capacity: single 2U amplified controller
Stacked or flown



SUBWOOFERS

SB15m: compact subwoofer (1x15")

System bandwidth: 42 Hz - 20 kHz
Contour reinforced by 8 dB at 100 Hz
Ratio of one SB15m to four 5XT



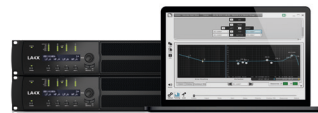
SOFTWARE

SOUNDVISION: simulation software



3D electro-acoustic & mechanical simulation software

LA Network Manager: control & monitoring software



Real-time control and monitoring up to 253 units
Multiple network topologies

X series: a complete range for professional sound reinforcement



The X Series comprise four coaxial enclosures with distinct formats, bandwidth, SPL and coverage angles adapted to short throw applications in rental productions and fixed installations. With studio monitor sound quality, the X Series convey a natural and transparent sound.

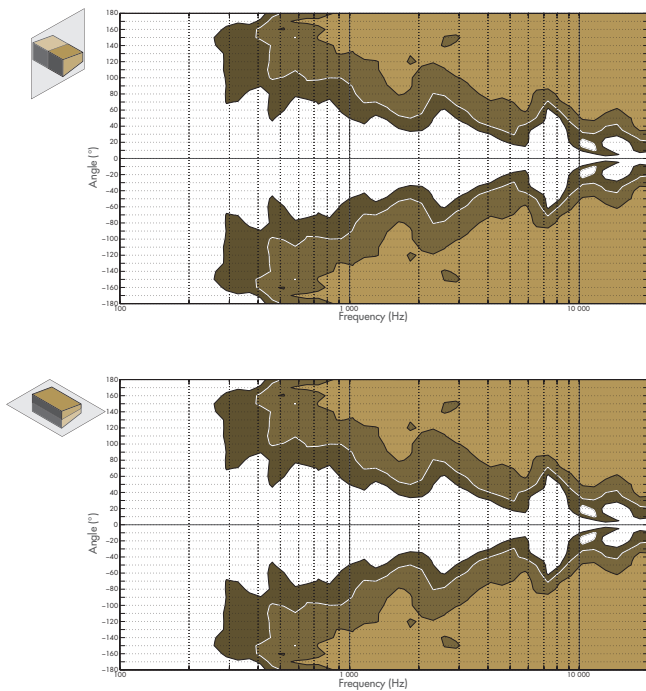
Coaxial technology allows for a compact design and constant tonal balance over distance, giving the X Series smooth coverage for off-axis audiences, no minimum listening distance and high feedback rejection.

SPECIFICATIONS

Description	Passive 2-way coaxial enclosure, controlled and amplified by LA4X / LA8
Usable bandwidth (-10 dB)	95 Hz – 20 kHz ([5XT] preset)
Maximum SPL¹	119 dB ([5XT] preset)
Nominal directivity	110° axisymmetric
Transducers	LF: 1 × 5" weather resistant, bass-reflex HF: 1 × 1" compression driver
Nominal impedance	16 Ω
Connectors	IN: 1 × 4-point SpeakON® and screw terminal LINK: 1 × 4-point SpeakON® and screw terminal
Rigging and handling	1 × 3/8" insert for microphone stand 2 × M6 inserts for ETR5 U-bracket
Weight (net)	3.5 kg / 7.7 lb
Cabinet	First grade Baltic birch plywood
Finish	Dark grey brown Pantone® 426C Pure white RAL® 9010 Custom RAL® code on special order
IP	IP30 or IP35 under specific conditions ²

1- Peak level at 1 m under free field conditions using 10 dB crest factor pink noise with preset specified in brackets.
2- Please consult application@l-acoustics.com for more information.

BEAMWIDTH



► Dispersion angle diagram of a single 5XT in vertical (top) and horizontal (bottom) plane using lines of equal sound pressure at -3 dB, -6 dB, -12 dB.

DIMENSIONS

